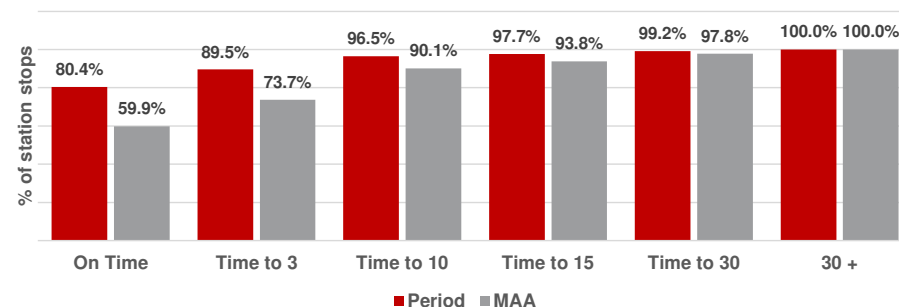


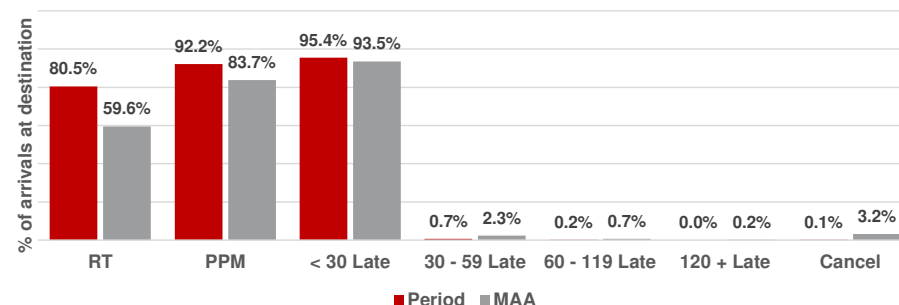
| Punctuality at all stations | Punctuality at each station stop | | | | | |
|-----------------------------|----------------------------------|--------------|--------------|--------------|--------------|--------------|
| | On Time | | Time to 3 | | Time to 15 | |
| | Period | MAA | Period | MAA | Period | MAA |
| Total LNER | 80.4% | 59.9% | 89.5% | 73.7% | 97.7% | 93.8% |
| Service Groups | | | | | | |
| Anglo Scottish Services | 81.4% | 58.3% | 89.6% | 71.9% | 97.6% | 93.2% |
| West Yorkshire Services | 80.0% | 65.4% | 90.1% | 79.3% | 98.5% | 96.2% |
| West Yorkshire Extensions | 78.2% | 65.6% | 90.0% | 81.4% | 96.9% | 96.6% |
| Anglo Scot Extensions | 74.1% | 49.9% | 85.5% | 64.1% | 95.6% | 89.1% |

Punctuality at each station stop



| Punctuality at destination - Pd | Late arrivals at destination only | | | | | |
|---------------------------------|-----------------------------------|-------------|---------------|-------------|------------|-------------|
| | 30 - 59 mins | | 60 - 119 mins | | > 119 mins | |
| | # | % | # | % | # | % |
| Total LNER | 24 | 0.7% | 6 | 0.2% | 5 | 0.1% |
| Service Groups | | | | | | |
| Anglo Scottish Services | 12 | 0.7% | 4 | 0.2% | 2 | 0.1% |
| West Yorkshire Services | 11 | 0.8% | 1 | 0.1% | 1 | 0.1% |
| West Yorkshire Extensions | 0 | 0.0% | 0 | 0.0% | 0 | 0.0% |
| Anglo Scot Extensions | 1 | 0.7% | 1 | 0.7% | 2 | 1.4% |

Arrivals at destination only



| Cancellations | Cancellations | | | | | |
|---------------------------|--------------------------|---------------|-------------|-------------|-------------|-------------|
| | Total scheduled services | | All causes | | LNER only | |
| | Period | MAA | Period | MAA | Period | MAA |
| Total LNER | 3,392 | 45,305 | 3.5% | 3.2% | 0.6% | 1.5% |
| Service Groups | | | | | | |
| Anglo Scottish Services | 1,695 | 20,802 | 2.8% | 2.3% | 0.3% | 1.0% |
| West Yorkshire Services | 1,448 | 19,740 | 4.3% | 3.7% | 0.9% | 1.9% |
| West Yorkshire Extensions | 111 | 1,418 | 3.6% | 4.0% | 0.0% | 1.7% |
| Anglo Scot Extensions | 138 | 3,345 | 4.3% | 5.5% | 1.4% | 2.5% |

| Capacity | Reportable short formations | | | |
|---------------------------|-----------------------------|----------|-------------|-------------|
| | # | # | % | % |
| | Period | MAA * | Period | MAA * |
| Total LNER | 0 | 0 | 0.0% | 0.0% |
| Service Groups | | | | |
| Anglo Scottish Services | 0 | 0 | 0.0% | 0.0% |
| West Yorkshire Services | 0 | 0 | 0.0% | 0.0% |
| West Yorkshire Extensions | 0 | 0 | 0.0% | 0.0% |
| Anglo Scot Extensions | 0 | 0 | 0.0% | 0.0% |

* To be reported from May 2021

- Anglo Scottish train services covers LNER's services between London and Edinburgh.
- Anglo Scottish train extensions covers those services which then go on to other places from Edinburgh, such as Aberdeen and Inverness. The Sunderland service also sits within this group.
- West Yorkshire train services covers LNER's services between London and Leeds, Bradford, Harrogate or Lincoln.
- West Yorkshire extension services cover between London and Skipton and London and Hull.