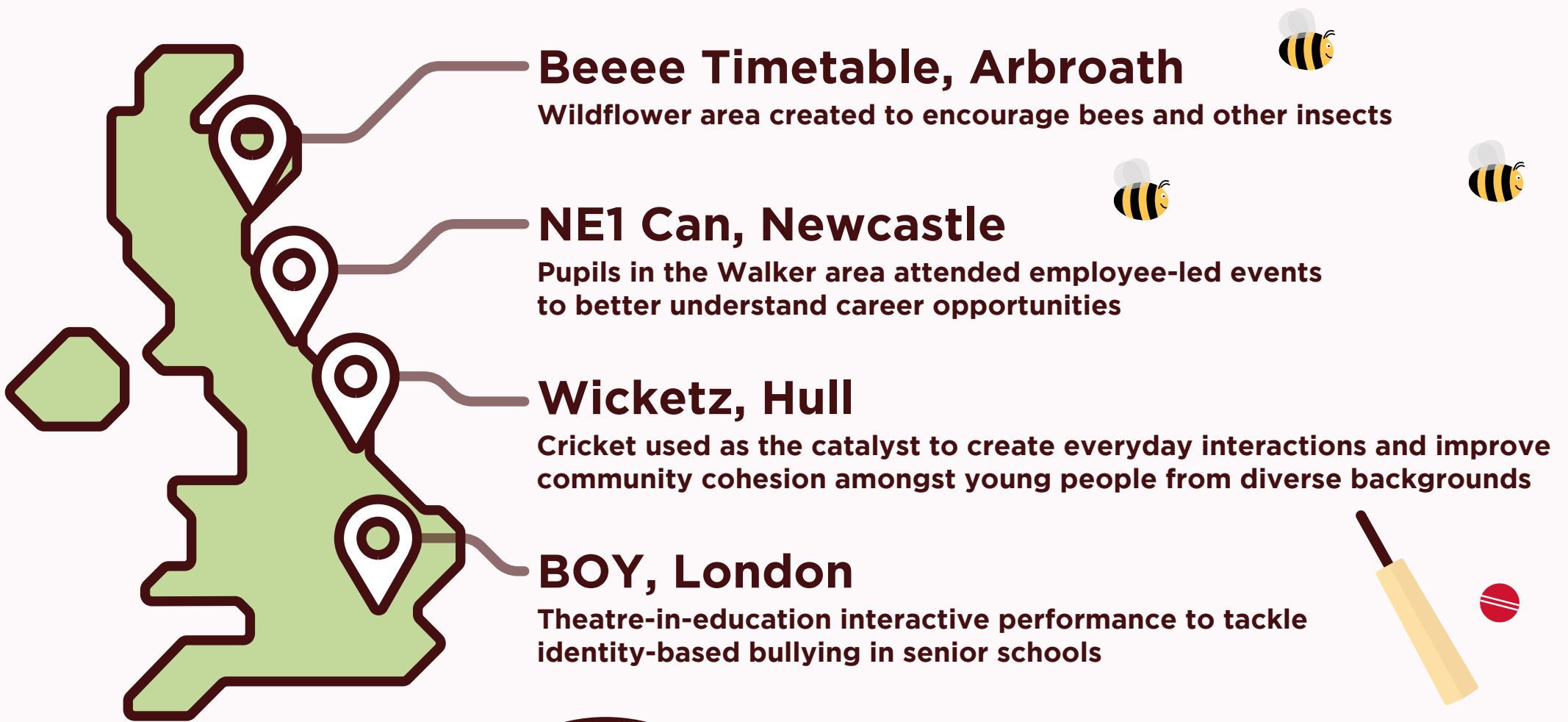


LNER's Customer and Community Investment Fund of £500,000 per year supports projects across our route



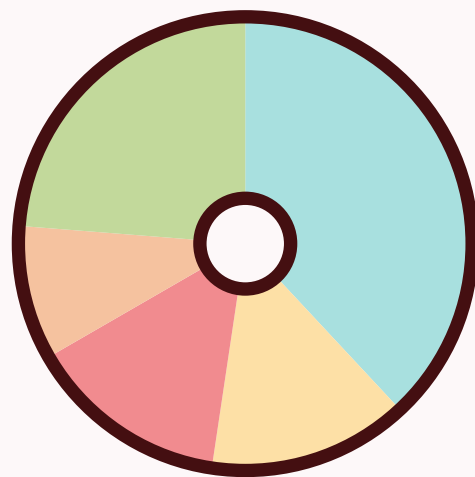
These are just a few from 2019-20:



Our key themes



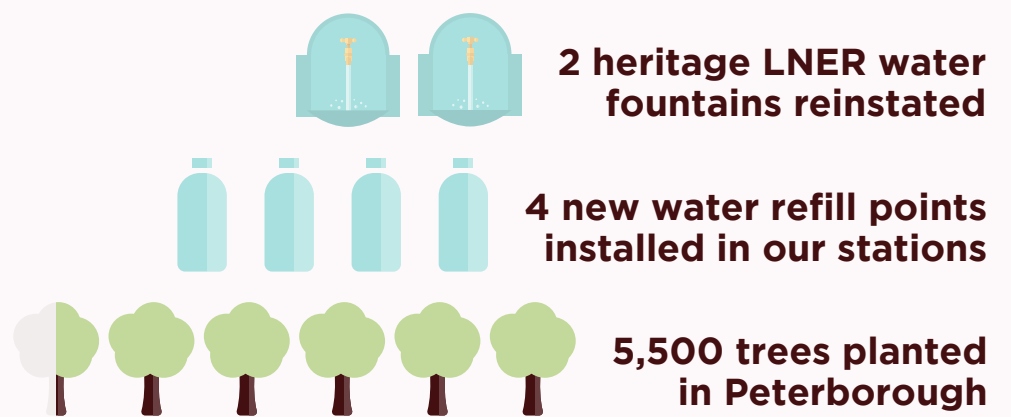
2019-20



2020-21

- Mental Health
- Education
- Employability
- Diversity & Inclusion
- Environment

Some of our environment projects

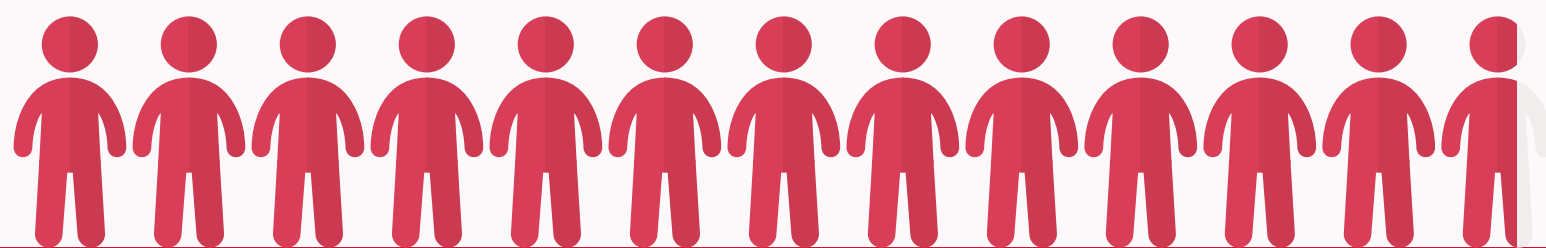


260% increase in applications received

2020

259

12,661 directly benefitted in 2019-20



2019

72



Customer & Community Investment Fund 2019-2021

LNER
LONDON NORTH EASTERN RAILWAY