

Current Performance Period* : Period 2025 - 12
02 February - 01 March 2025

* There are 13 four-week periods in each railway year that runs from April to March

Punctuality at all stations	Punctuality at each station stop:					
	within 1 minute of schedule		within 3 minute of schedule		within 15 minutes of schedule	
	Period	MAA [#]	Period	MAA	Period	MAA
All LNER Services	55.8%	56.4%	73.1%	72.7%	94.0%	92.8%
LNER Routes:						
London-Edinburgh	56.4%	57.2%	73.0%	72.3%	94.0%	92.3%
London-West Yorkshire	53.0%	57.2%	72.5%	74.3%	94.3%	94.1%
London-West Yorkshire Extensions	53.2%	60.5%	70.9%	77.3%	93.2%	94.5%
London-Edinburgh Extensions	61.3%	51.6%	75.5%	68.9%	92.9%	90.5%

Moving Annual Average, a measure of our average punctuality over the last 12 months

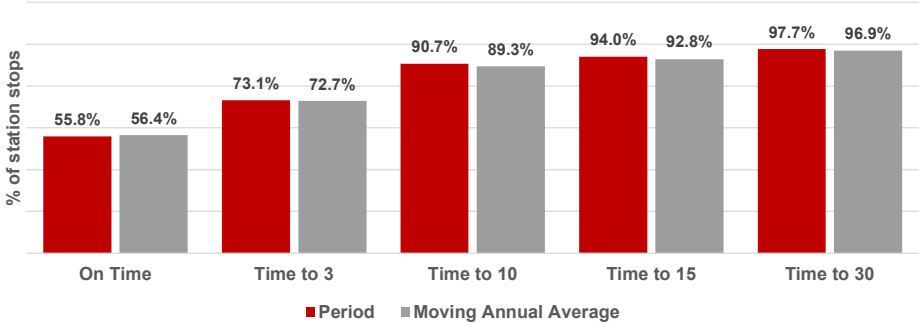
Punctuality at destination	Late arrivals at the final destination:					
	between 30 and 59 minutes		between 60 and 119 minutes		greater than 119 minutes	
	Number	Percentage	Number	Percentage	Number	Percentage
All LNER Services	98	2.1%	36	0.8%	16	0.3%
LNER Routes:						
London-Edinburgh	59	2.5%	20	0.8%	11	0.5%
London-West Yorkshire	30	1.6%	11	0.6%	3	0.2%
London-West Yorkshire Extensions	0	0.0%	2	1.9%	0	0.0%
London-Edinburgh Extensions	9	3.5%	3	1.2%	2	0.8%

Services Cancelled	Fully Cancelled Services					
	Total scheduled services		Cancelled due to any cause		Cancelled due to LNER causes only	
	Period	Annual	Period	MAA	Period	MAA
Total LNER	4,579	55,234	2.8%	4.0%	0.3%	1.3%
Service Groups						
London-Edinburgh	2,357	24,592	2.1%	3.4%	0.4%	0.9%
London-West Yorkshire	1,854	24,702	3.6%	4.6%	0.2%	1.6%
London-West Yorkshire Extensions	108	1,446	7.9%	6.5%	0.0%	2.4%
London-Edinburgh Extensions	260	4,494	1.2%	3.4%	0.0%	1.1%

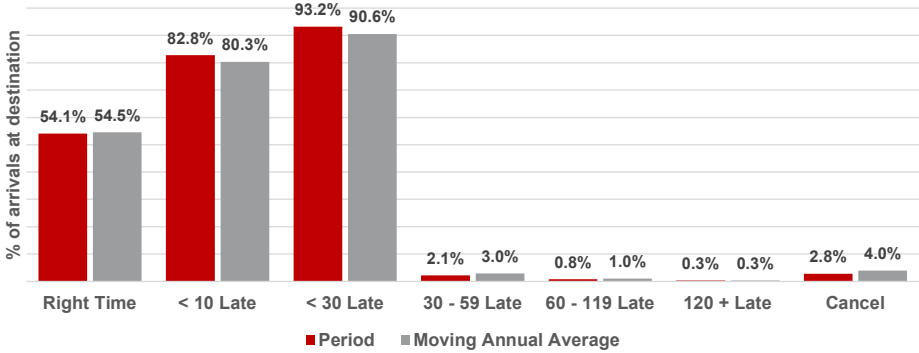
- London-Edinburgh includes LNER services between London and Edinburgh and also London and Middlesbrough
- London-Edinburgh Extensions includes LNER services between London, Aberdeen and Inverness
- London-West Yorkshire includes LNER services between London and Leeds, Bradford, Harrogate and Lincoln
- London-West Yorkshire Extensions includes LNER services between London and Skipton and London and Hull



Punctuality at each station stop



Late arrivals at the final destination



Seats Provided	Trains with less seats than planned			
	Number	Number	%	%
	Period	MAA	Period	MAA
Total LNER	2	2	0.0%	0.1%
Service Groups				
London-Scotland	0	1	0.0%	0.1%
London-West Yorkshire	2	1	0.1%	0.1%
London-West Yorkshire Extensions	0	0	0.0%	0.0%
London-Edinburgh Extensions	0	0	0.0%	0.0%

Current Performance Period* : Period 2025 - 12
02 February - 01 March 2025



Punctuality at all stations - LNER	Punctuality at each station stop	
	Time to 3 %	Cancellations %
SCOTLAND		
Aberdeen	81.1%	1.0%
Arbroath	76.7%	1.0%
Aviemore	82.1%	0.0%
Blair Atholl	76.2%	* Not Available
Carrbridge	73.8%	* Not Available
Dunbar	83.1%	0.4%
Dunblane	44.4%	* Not Available
Dundee	85.5%	0.5%
Dunkeld & Birnam	64.9%	* Not Available
Edinburgh Waverley	83.8%	1.1%
Falkirk Grahamston	73.2%	0.0%
Gleneagles	64.0%	* Not Available
Haymarket	78.3%	0.4%
Inverness	91.1%	0.0%
Inverkeithing	82.0%	1.0%
Kinguise	67.9%	0.0%
Kirkcaldy	82.5%	1.0%
Leuchars	68.8%	* Not Available
Montrose	75.7%	1.0%
Newtonmore	74.2%	* Not Available
Perth	82.1%	0.0%
Pitlochry	76.8%	0.0%
Reston	91.2%	0.0%
Stirling	80.4%	0.0%
Stonehaven	70.9%	1.0%

Punctuality at all stations - LNER	Punctuality at each station stop	
	Time to 3 %	Cancellations %
NORTH OF ENGLAND		
Alnmouth	78.8%	1.2%
Berwick-on-Tweed	73.8%	1.0%
Darlington	75.7%	1.0%
Durham	77.7%	0.8%
Middlesbrough	88.8%	* Not Available
Morpeth	79.2%	1.0%
Newcastle	76.0%	0.8%
Northallerton	64.4%	0.8%
Thornaby	83.2%	* Not Available
York	71.2%	1.3%

Punctuality at all stations - LNER	Punctuality at each station stop	
	Time to 3 %	Cancellations %
CENTRAL ENGLAND		
Bradford Forster Square	89.7%	4.0%
Brough	81.4%	9.2%
Doncaster	70.1%	2.4%
Harrogate	88.5%	1.7%
Horsforth	88.1%	1.7%
Hull	84.5%	10.8%
Keighley	82.1%	* Not Available
Leeds	76.8%	2.6%
Selby	80.0%	7.7%
Shipley	84.7%	3.3%
Skipton	89.5%	* Not Available
Wakefield Westgate	69.6%	2.7%
SOUTH ENGLAND		
Grantham	64.6%	2.7%
Lincoln	95.6%	3.8%
London Kings Cross	75.0%	3.2%
Newark Northgate	70.4%	2.4%
Peterborough	64.3%	2.8%
Retford	62.7%	2.5%
Stevenage	64.1%	4.5%

* This measure is not currently available for this location

LNER Planned and Cancelled Services - 2024-2025



Railway Period	Dates	Services originally planned in the timetable	Services fully removed from the timetable prior to the planned day of operation (Full Cancellations) *		Planned services on the day +	On the Day Cancellations		Services operated on the day	Services partially removed from the timetable prior to the planned day of operation (Part Cancellations) **		Notes relating to LNER's Operational Performance	
			LNER #	Other Industry (Not LNER) ~		LNER #	Other Industry (Not LNER) ~		LNER #	Other Industry (Not LNER) ~	Principal causes for services removed from the timetable prior to the planned day of operation	Principal causes for services removed from the timetable on the planned day of operation (On the Day Cancellations)
2512	02/02/25 - 01/03/25	4,579	0	0	4,579	25	102	4,453	4	0	LNER: - Trains in the incorrect location due to disruption Other Industry:	LNER: - Train faults - Station closure at Stevenage X 2 Other Industry: - Fatalities at Stevenage X 2 - Animal strike near Huntingdon - Trespasser at Stevenage

* This includes adjustments made for the impact of large incidents or short term resource changes (sometimes referred to as 'P-coded cancellations)

** These services ran for more than 50% their planned journey (these are also counted as 'P-coded cancellations for the cancelled section)

Changes made due to LNER causes such as fleet technical or traincrew related issues

~ Changes made due to other industry (not LNER) causes such as major infrastructure defects or the effects of severe weather (eg storms, flooding)

+ These numbers form the basis on which periodic industry performance numbers are calculated