

Current Performance Period : Period 2024 - 08
15 October - 11 November 2023



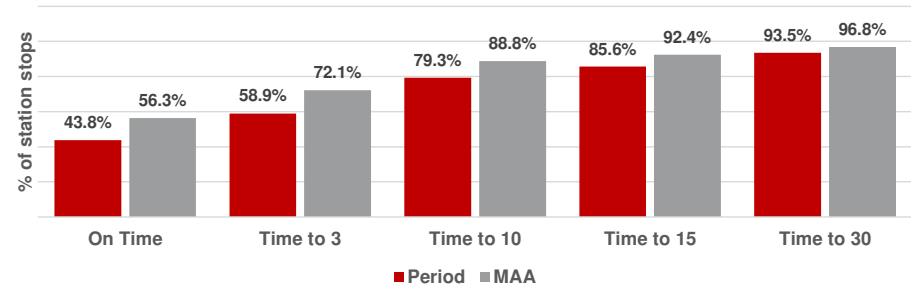
Punctuality at all stations	Punctuality at each station stop					
	On Time		Time to 3		Time to 15	
	Period	MAA	Period	MAA	Period	MAA
Total LNER	43.8%	56.3%	58.9%	72.1%	85.6%	92.4%
Service Groups						
Anglo Scottish Services	40.4%	55.6%	53.0%	70.5%	82.2%	91.5%
West Yorkshire Services	49.7%	57.8%	67.8%	74.5%	92.5%	94.3%
West Yorkshire Extensions	51.4%	58.9%	72.7%	76.8%	91.7%	94.8%
Anglo Scot Extensions	38.0%	54.2%	52.5%	70.4%	77.5%	89.9%

Punctuality at destination - Pd	Late arrivals at destination only					
	30 - 59 mins		60 - 119 mins		> 119 mins	
	#	%	#	%	#	%
Total LNER	203	4.8%	91	2.1%	38	0.9%
Service Groups						
Anglo Scottish Services	144	7.6%	56	3.0%	23	1.2%
West Yorkshire Services	32	1.6%	23	1.2%	12	0.6%
West Yorkshire Extensions	4	3.8%	0	0.0%	0	0.0%
Anglo Scot Extensions	23	7.2%	12	3.8%	3	0.9%

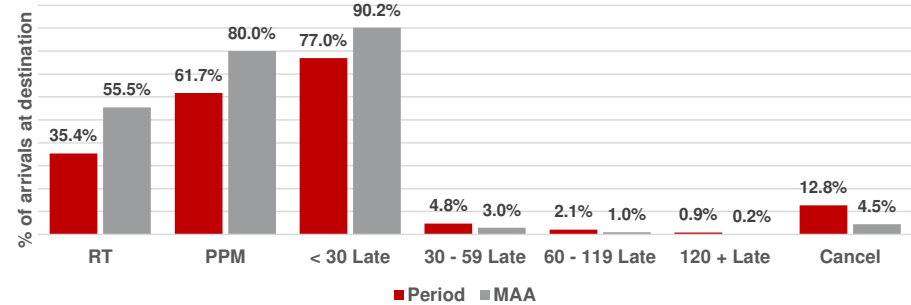
Cancellations	Cancellations					
	Total scheduled services		All causes		LNER only	
	Period	Annual	Period	MAA	Period	MAA
Total LNER	4,263	51,538	12.8%	4.5%	3.2%	1.7%
Service Groups						
Anglo Scottish Services	1,888	22,948	12.8%	4.3%	3.5%	1.4%
West Yorkshire Services	1,951	23,231	11.9%	4.4%	2.7%	2.0%
West Yorkshire Extensions	104	1,251	17.3%	5.9%	5.3%	2.9%
Anglo Scot Extensions	320	4,108	16.3%	5.4%	4.2%	1.7%

- Anglo Scottish train services covers LNER's services between London and Edinburgh. The Middlesbrough services also sit within this group.
- Anglo Scottish train extensions covers those services which then go on to other places from Edinburgh, such as Aderdeen and Inverness. The Sunderland services also sit within this group.
- West Yorkshire train services covers LNER's services between London and Leeds, Bradford, Harrogate or Lincoln.
- West Yorkshire extension services cover between London and Skipton and London and Hull.

Punctuality at each station stop



Arrivals at destination only



Capacity	Reportable short formations			
	#	#	%	%
	Period	MAA	Period	MAA
Total LNER	5	3	0.1%	0.1%
Service Groups				
Anglo Scottish Services	1	1	0.1%	0.1%
West Yorkshire Services	4	2	0.2%	0.1%
West Yorkshire Extensions	0	0	0.0%	0.1%
Anglo Scot Extensions	0	0	0.0%	0.0%

LNER Planned and Cancelled Services - 2023-2024

Railway Period	Dates	Services originally planned in the timetable	Services fully removed from the timetable prior to the planned day of operation (Full Cancellations) *		Planned services on the day +	On the Day Cancellations		Services operated on the day	Services partially removed from the timetable prior to the planned day of operation (Part Cancellations) **		Notes relating to LNER's Operational Performance	
			LNER #	Other Industry (Not LNER) ~		LNER #	Other Industry (Not LNER) ~		LNER #	Other Industry (Not LNER) ~	Principal causes for services removed from the timetable prior to the planned day of operation	Principal causes for services removed from the timetable on the planned day of operation (On the Day Cancellations)
2408	15/10/23 - 11/11/23	4,356	85	8	4,263	138	400	3,726	49	108	LNER: - Impact of industrial disputes Other Industry: - Storm Babet & Storm Ciaran - Structural damage on Plessey Viaduct - Adverse weather on Highland Mainline	LNER: - Impact of industrial disputes - Severe weather conditions Other Industry: - Severe floods at multiple locations - Signal failure at Holme & St. Neots - OHL damage near Peterborough

* This includes adjustments made for the impact of large incidents or short term resource changes (sometimes referred to as 'P-coded cancellations')

** These services ran for more than 50% their planned journey (these are also counted as 'P-coded cancellations' for the cancelled section)

Changes made due to LNER causes such as fleet technical or traincrew related issues

~ Changes made due to other industry (not LNER) causes such as major infrastructure defects or the effects of severe weather (eg storms, flooding)

+ These numbers form the basis on which periodic industry performance numbers are calculated